

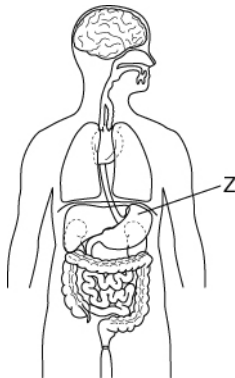
On your answer sheet, write in or circle the correct letter for each question.

7Aa

- 1 What are all living things called?
 - A animals
 - B bacteria
 - C organisms
 - D nutritions
- 2 Which *three* things do all animals and plants do?
 - A grow, reproduce, play
 - B eat meat, reproduce, move
 - C walk, talk, grow
 - D grow, reproduce, get rid of waste
- 3 Which 'life process' is involved when a mouse smells cheese?
 - A excretion
 - B sensitivity
 - C reproduction
 - D respiration
- 4 Some modern robots behave just like humans. A reason why they are non-living is because they do not:
 - A reproduce.
 - B require an energy source.
 - C move.
 - D sense things in their surroundings.

7Ab

- 1 In the picture, what is part 'Z'?



- A stomach
- B hand
- C kidney
- D lung

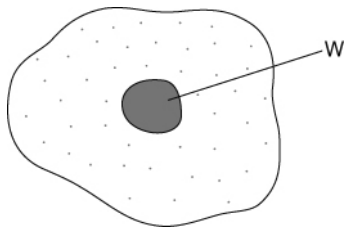
- 2 An organ found in plants is the:
 - A stem.
 - B stomach.
 - C xylem.
 - D soil.
- 3 Which of these is the *best* description of the function of the lungs?
 - A They get extra air out of your body.
 - B They can get bigger and smaller.
 - C They are found in your chest.
 - D They get oxygen into your blood and get carbon dioxide out of your blood.
- 4 Which life process are the kidneys used for?
 - A sensitivity
 - B respiration
 - C excretion
 - D growth

7Ac

- 1 All organs contain:
 - A hearts.
 - B tissues.
 - C systems.
 - D newspaper.
- 2 Your heart is made of:
 - A food.
 - B skin.
 - C fat and muscle.
 - D blood.
- 3 Roots and leaves both contain:
 - A xylem.
 - B root hairs.
 - C soil.
 - D nerves.
- 4 Root hairs:
 - A help protect a root.
 - B help a root to take in water.
 - C help to get rid of wastes from a root.
 - D use photosynthesis to make food.

7Ad

- 1 On this drawing of an animal cell, what is the part labelled W?



- A cell surface membrane
B chloroplast
C nucleus
D heart
- 2 Which part do plant cells have but animal cells do not?
A cell wall
B cytoplasm
C cell surface membrane
D blood
- 3 On the drawing of the animal cell, what does part W do?
A makes energy
B makes food
C controls the cell
D holds the cell together
- 4 What is chlorophyll?
A a cough medicine made from plant cells
B a substance stored in the vacuoles of plant cells
C a substance that is poisonous to cells
D a green substance found in chloroplasts

7Ae

- 1 An organ system is:
A a collection of organs working together to do an important job.
B a collection of tissues that do the same job.
C a collection of tissues that do different jobs.
D a way of counting the number of organs in the body.
- 2 The water transport system in plants:
A takes water from the leaves to the roots.
B takes water from the roots to the leaves.
C puts water into the soil.
D is unusual because it does not contain any organs.
- 3 Which organ system carries information around the body?
A digestive system
B breathing system
C circulatory system
D nervous system
- 4 The gullet is part of the:
A digestive system.
B breathing system.
C circulatory system.
D nervous system.