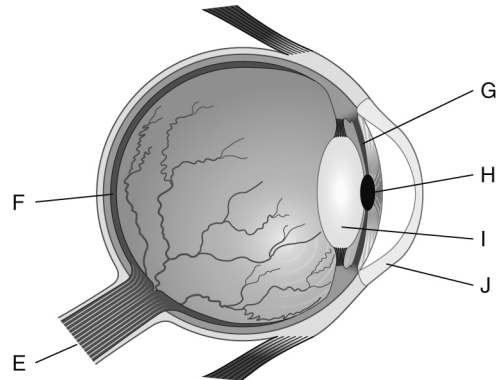
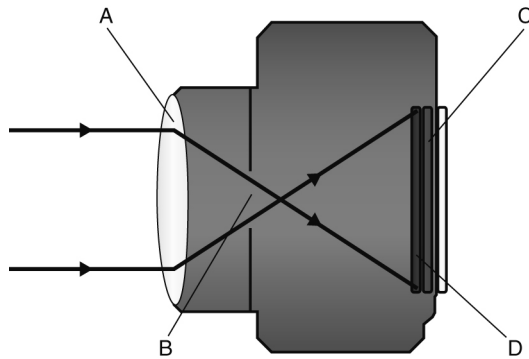


Name \_\_\_\_\_ Class \_\_\_\_\_ Date \_\_\_\_\_

The diagrams show a digital camera and an eye.



1 Write down the names of the parts labelled in the diagrams.

A and I \_\_\_\_\_ B \_\_\_\_\_ C \_\_\_\_\_  
 D \_\_\_\_\_ E \_\_\_\_\_ F \_\_\_\_\_  
 G \_\_\_\_\_ H \_\_\_\_\_

2 Which part of the eye or camera:

- a lets light in \_\_\_\_\_
- b focuses light \_\_\_\_\_
- c changes the energy transferred by light into electrical signals \_\_\_\_\_
- d changes the energy transferred by light into nerve impulses \_\_\_\_\_
- e sends nerve impulses to the brain \_\_\_\_\_

3 The iris can change size to control how much light gets into the eye. Which of these statements is correct? Tick (✓) *two* boxes.

- The iris makes the pupil large if the light is dim.
- The iris makes the pupil small if the light is dim.
- The iris makes the pupil large if the light is bright.
- The iris makes the pupil small if the light is bright.

**I can...**

- identify the parts of cameras and eyes
- state what the different parts of eyes and cameras do.