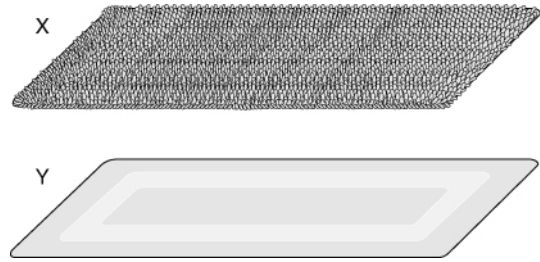
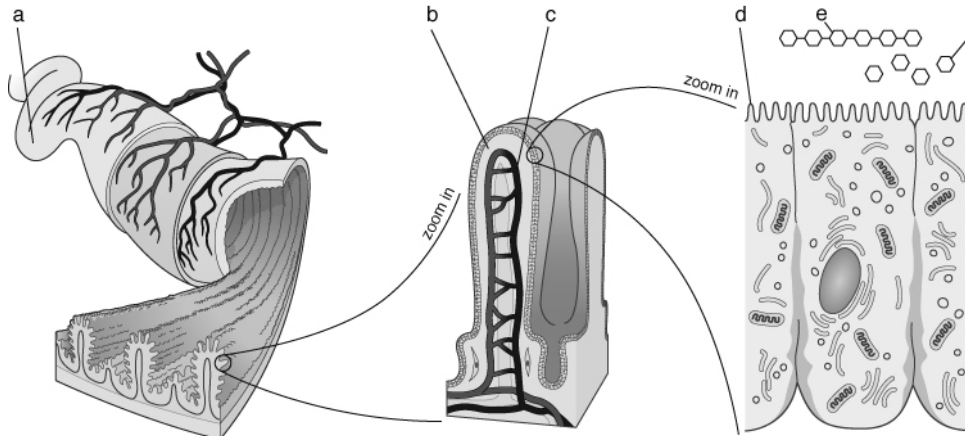


- 1 Jason's bathroom has two cotton bathmats in it, X and Y.
- Which bathmat will absorb water more quickly?
 - Explain your answer to part a.



- 2 The diagram shows how food gets into the body.



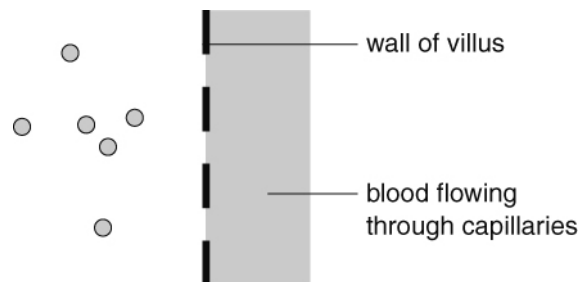
From the words in the box, choose *one* to match each label **a–f**.

capillary	glucose molecule	microvillus	small intestine
	starch molecule	villus	

- 3 Explain how the small intestine is adapted to absorbing the products of digestion quickly.

- 4 The circles in this diagram represent soluble food molecules in the small intestine.

- What will happen to the number of food molecules in the blood in the diagram?
- Why will this happen? Explain as fully as you can.
- This process is very slow through skin but very fast through the wall of the small intestine. Explain why.
- Why is it useful if the blood flows quickly, continuously supplying fresh blood?



I can...

- explain how diffusion allows the absorption of soluble nutrients by the small intestine
- explain how the small intestine is adapted to its function.