

Name \_\_\_\_\_ Class \_\_\_\_\_ Date \_\_\_\_\_

Your teacher may watch to see if you can:

- read a measuring device
- follow instructions to construct circuits.

An ammeter is used to measure current.

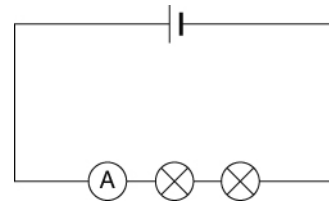
**Apparatus**

- cells/power pack
- 2 bulbs
- ammeter
- connecting wires

**Method**

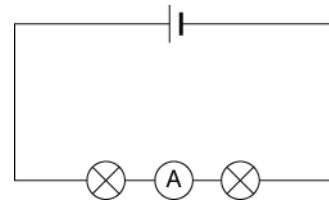
**A** Build this circuit. Show it to your teacher before you switch on.

Write down the reading on the ammeter.

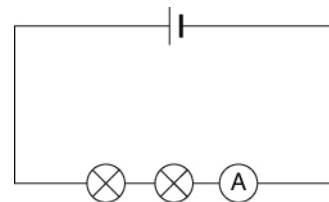


**B** Now build this circuit.

Write down the reading on the ammeter.



**C** Build this circuit and write down the ammeter reading.



**Considering your results/conclusion**

Fill in the gaps in these sentences using words from the box. You may need to use some words more than once.

The reading on the \_\_\_\_\_ shows the amount of \_\_\_\_\_ flowing around the \_\_\_\_\_.

The current is the \_\_\_\_\_ everywhere in the \_\_\_\_\_. The current is not \_\_\_\_\_ by the bulbs.

- |         |         |         |      |         |
|---------|---------|---------|------|---------|
| ammeter | circuit | current | same | used up |
|---------|---------|---------|------|---------|

**I can...**

- construct a circuit from instructions provided in the form of a circuit diagram
- measure the current in part of a circuit using an ammeter
- describe what the current is like at different points in a simple circuit
- draw a conclusion from evidence.