

The background is a dark green field filled with various colorful, rounded geometric shapes in shades of yellow, teal, light blue, and pink. Interspersed among these shapes are stylized illustrations of animals: a pink bird with a yellow beak, a blue owl with yellow eyes, and a pink bird with a blue beak. The overall style is modern and playful.

**A series of events and exhibitions
in and around Highams Park**

HIGHAMS PARK ART TRAIL

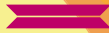
10th—19th May



THE FRIENDS OF THE HIGHAMS PARK

SPRING FESTIVAL 2019

AT THE HIGHAMS PARK
SUNDAY · 19TH MAY · 11AM-4PM



JOIN US!

FOR AN AFTERNOON OF MUSIC (INCLUDING A BRASS BAND),
ENTERTAINMENT, FOOD & CRAFT STALLS. FEATURING THE
ESSEX DOG DISPLAY TEAM, HIGHAMS PARK'S VERY OWN
MAYPOLE AND THE HIGHAMS PARK GREAT BRITISH BAKE OFF
(ORGANISED BY ACT 2).

THE HIGHAMS PARK IG8 9RB – ACCESS FROM HENRY'S AVENUE
TAMWORTH AVENUE & KEYNSHAM AVENUE

<https://tinyurl.com/HP-SpringFest2019>



SPONSORED BY



Hello and welcome to the 2019 Highams Park Art Trail!

In a year when Waltham Forest is hosting the first London Borough of Culture, the ARC team are excited to be bringing you this year's Highams Park Art Trail. Packed with lots of great work by local artists and the Wild About Highams Park animal sculpture trail this year we are looking at nature and celebrating how lucky we are to be so close to the forest. There are also lots of great events lined up for you to enjoy, the week kicks off with the Vintage Market at Hale End Library, with vintage stalls and book signings, kids activities and music from Harmony E4 Choir. During the week of the Art Trail you will be able to visit artists studios, listen to live bands at Highams Park Live, hear poetry being read whilst sipping wine, make a clay pot, dance to ABBA and see the Regal lit up with neon signs.

The week will finish with the Spring Festival in The Highams Park (by the lake) on Sunday 19th May, where there will be Maypole dancing, craft stalls, kids activities, and much more.

The ARC team are all volunteers from the Highams Park Planning Group and give their time freely because we see the value in creating and celebrating arts and culture, bringing people together and celebrating this unique community.

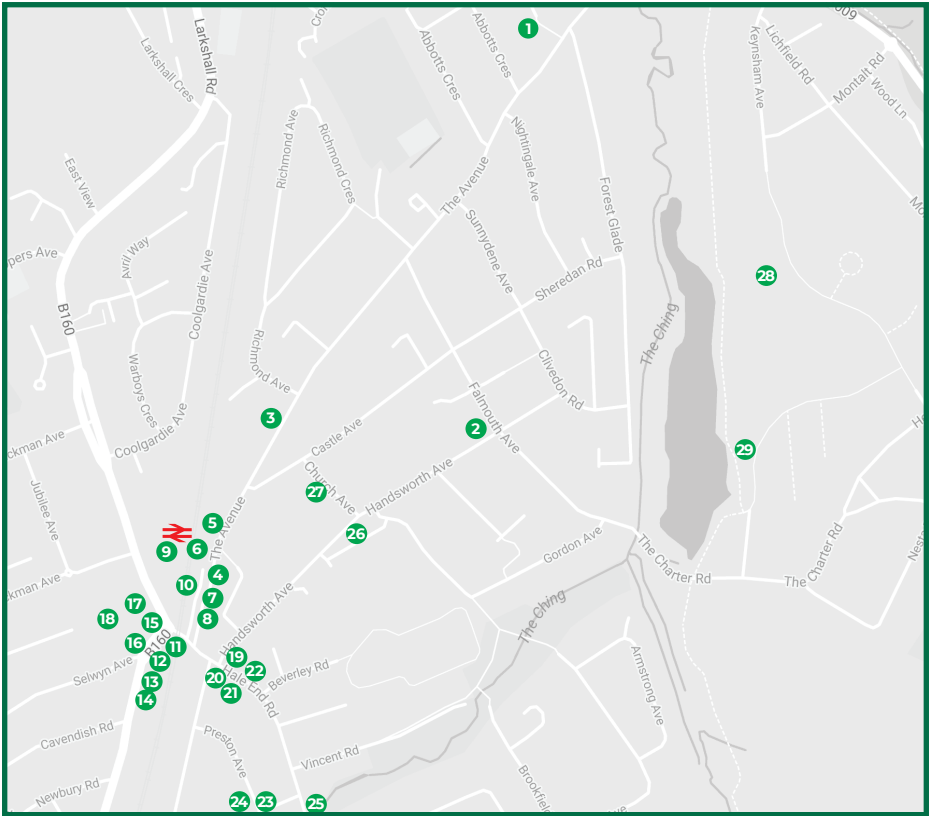
We would like to thank all the artists and creatives who have taken the time to get involved and all the shops and businesses that have given space and time to exhibit work or host events. We literally couldn't do it with out you!

So we hope you enjoy this years trail, If you would like to get involved in the next one, you can contact us at arc.highampspark@gmail.com



Please check the Facebook Page/website
for the most up-to-date information

[@HPArtsandCulture](https://www.instagram.com/hpartsandculture)
[instagram.com/hpartsandculture](https://www.instagram.com/hpartsandculture)



Venues

1. 11 Brookhouse Gardens, E4 6LZ (Claudia Bentley)
2. 12 Falmouth Avenue, E4 9QN (Dorothea Schilling)
3. Highams Lodge, 49-51 The Avenue, E4 9LB
4. Choice Cards, 28 The Avenue, E4 9LD
5. LFS UK, 7a The Avenue, E4 9LB
6. The Function Room, 3 The Avenue, E4 9LB
7. Henry Morgan Opticians, The Avenue, E4 9LE
8. V & A Books, 2 The Avenue, E4 9LE
9. Highams Park Station, The Avenue, E4 9LA
10. The Village Florist, 2 Station Approach, E4 9LA
11. Corner Café, 410 Hale End Road, E4 9LQ
12. James Hawes, 5 The Broadway E4 9LQ
13. Karen Jane's Florist, 9A The Broadway, E4 9LQ
14. Vinoramica, 9B The Broadway, E4 9LQ
15. Indulge Cafe, 7 The Broadway E4 9LQ
16. Meade Estate Agents, 2 The Broadway, E4 9LQ
17. Yaz Restaurant, 7-9 Signal Walk, E4 9BW
18. Ziggy Played Guitar, Cafe, 3 Signal Walk, E4 9BW
19. County Arms, 420 Hale End Road, E4 9PB
20. The Regal Building, Hale End Road, E4 9PT
21. Halex Vinoteca, 483 Hale End Road, E4 9PT
22. Grace and Albert Cookshop, 406 Hale End Road, E4 9PB
23. 25 Studley Avenue, E4 9PS (Eric King)
24. 26 Studley Avenue, E4 9PS (Liepa Dzintris)
25. 276 Hale End Road, IG8 9LP (little library launch)
26. Front of Highams Park School, Handsworth Avenue, E4
27. All Saints Church, Church Avenue, E4 9QD
28. The Highams Park, Entrances at Henry's Avenue, Tamworth Avenue and Keynsham Avenue
29. Humphry's Cafe, The Highams Park, Tamworth Avenue, IG8 9RF

Exhibitions



Open studio with Claudia Bentley

11 Brookhouse Gardens,
E4 6LZ

12th May, 1.00pm-5.00pm,
18th May, 1.00pm-5.00pm

Born in Brazil to a Colombian mother and English father, I'm an artist based in Highams Park. I make abstract drawings using pencils and marker pens. I explore interaction between colours to create a sense of depth and movement. Colour, and its infinite combinations create a poetry of their own.

Linda Bondy Humphry's Café

I do a lot of watercolours, acrylic and colour pencil drawings all mostly nature, animals, flowers and people too, not much else to say just like drawing and painting and have done it all my life.

Stephen Brockerton Corner Café

A series of long exposure photographs using light and movement to create abstract, contoured topographic landscapes. Stephen Brockerton is a local photographer with a studio for portraits, fashion to video production.



Faye Brown Meade Estate Agents LFS

I create my pieces using a combination of spontaneous inspiration but also looking at nature and everyday objects. I apply relief texture and pattern creating interesting surface design. I love the way these are beautiful functional pieces and aren't limited to being a static display.



Paula Caiger Karen Janes Florist

'The Forest Series'
3 mixed media paintings
Size: 10"x10"

Paul Cates James Hawes

Paul Cates paints abstract work mainly in acrylics and also does installations.



Robert Cheetham Ziggy Played Guitar

Born in Doncaster in 1973, I've been a professional storyboard artist and illustrator for over 18 years, now specialising in digital concept art in the film industry. I live in Highams Park and share a studio with other artists in Baker Street.

Jan Chlebek Pantry & Co.

Jan Chlebek is an artist working in London and the South of France. He paints in a variety of styles ranging from abstract to figurative. This exhibition depicts a series of silver birches located around a lake near Villefort in the Cevenne mountains.

All free entry & 10th-19th May
unless otherwise stated.

Andrew Golds V&A Books

Window Display of books about art
and literature



Gods Own Junkyard The Regal Building

Gods Own Junkyard began after 40 years of collecting old and iconic signs, saving them from destruction. These were shut away in storage, some have been refurbished and parts from others reused in newer signs. It was always a dream one day they be on display for the public to enjoy.

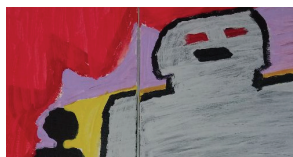
Gods Own Junkyard are pleased to be showing some of these reclaimed signs in Highams Park during the HP Art Trail.



Emily Graham & Georgina Clifford Ziggy Played Guitar

A series of portrait photographs of business owners in Highams Park. Emily and Georgina both work with people, as a nurse and clinical psychologist and have a keen interest in portrait photography. They wanted to capture the personalities of a number of business owners who have lived and worked in Highams Park for many years. Emily has recently started working as a freelance photographer.

Exhibitions



Highams Park School Year 12 Art Students Highams Park Station

Felted wool inspired by natural forms and structures

Highams Lodge

Showcasing artwork, crafts and a lucky dip for children from our talented residents here at CHT, Community, Housing and Therapy are dedicated to working with people with mental health challenges on the road to recovery.



Hugh Hamshaw

Yaz

Highams Park Lake was landscaped by Humphry Repton in the early 19th century. I am interested in how these arcadian picturesque notions play into our framing and understanding of how we invest and derive meaning from the natural environment.

Handsworth School

Hanging on the trees outside Hale End Library

Poetry written by children of Handsworth School

Highams Park School Year 10 Art Students Ziggy Played Guitar & Highams Park School

Year 10 pupils from Highams Park School have been working alongside UCL (Institute of Education) with a student teacher, who is a specialist in Constructed Fine Art Textiles. Pupils have been 'going wild' exploring recycled as well as everyday objects to create three dimensional shapes often inspired by natural forms.

Highams Park Creatives Humphry's Café

Exhibition of work from:

Bea Taylor, Christine Loze
Jenny L'Estrange, Juliet Thomas
Linda Bondy and Sue Royal



Eric King Open House

25 Studley Avenue, E4 9PS
11th, 12th & 18th, 19th May
2:00pm—6:00pm

I use photography, video and music. My subject matter is based on the central theme of reality and the virtual.



Jenny L'Estrange Humphry's Cafe,

Jenny has lived and worked on the boundaries of Epping Forest for most of her life. She is a self-taught artist who has always been keen on painting and drawing. Lino cutting is a comparatively recent foray for her and at the moment it is her favourite method of working. Walking and exploring Epping Forest when younger generated an interest in the natural world and this is the main subject of her work.



Dzintris Liepa Open house 26 Studley Avenue, E4 9PS 10—20th May 10am—6pm Thur 16th 12:30am—6pm

My pictures come in various styles; B&W film, colour and some surrealist digital compositions. The subjects are still lifes, street photography, and landscapes of scenes ranging from London to South Africa and America's South West.

Christine Loze Humphry's Cafe

Mostly self taught Christine has gradually developed a wide variety of styles, and been greatly influenced by the surrounding nature of nearby Epping Forest she enjoys painting colourful watercolour or acrylic abstracts, tiny miniatures and pastel landscapes. Her speciality is depicting precise, accurate likeness in animal and people portraits and she believes in teaching others that art is not only incredibly healing but attainable to anyone with a desire for learning to draw and paint.



Millie MacDougall Café Indulge

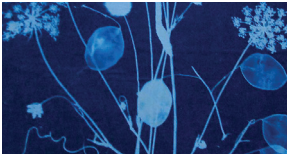
'Snapchat Pig' is different from my other works which normally consist of realistic portraits and pet portraits. I decided I wanted to try out a different style whilst still focusing on the subject of social media.

All free entry & 10th-19th May
unless otherwise stated.



Debbie Maya The Village Florist

My work is inspired by the Zen concept of simplicity. The work is made using very fragile bone china mixed with other mediums such as wood, enamelled copper, concrete and textile, a collaboration of contrasting materials.



Carole Nunes Halax Vinoteca

Carole Nunes is a textile artist who explores organic images of the natural world. She works both in London and the South of France producing various textile images most of which are inspired by plants and landscapes, especially those around the Mediterranean. The landscapes are produced by a felting technique and the plant images by cyanotype technique.



Yuka Penny Choice Cards

I am a wool sculptor living in Highams Park specialising in dog sculptures.

I create realistic and characterful miniature dogs with wool using a needle felting technique. In this display you can see a selection of my recent works, including my own dog's miniature!

Pins & Needles Spot the birdie!

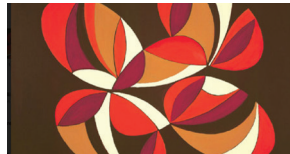
Yarnbombing, various knitted birds made by the members of Pins & Needles. Can you find the tree they are hiding in?

Chris Rain The Function Room

I'm a designer / illustrator living in Highams Park. I like to make things look beautiful and work beautifully. I founded my own innovation studio last year. In Dungeons and Dragons I would be chaotic good.

Gill Roberts Meade's Estate Agents & LFS

This year I have been making bowls decorated with scenes based on Highams Park and Epping Forest, Chingford Common, Chingford Lane and Highams Park Lake.



Dorothea Schilling Open House

12 Falmouth Ave E4 9QN
18th & 19th May
10.00am to 7.00pm

Dorothea's inspiration comes from within the intense forms and colours of everyday life.

She works with different media from oil to acrylic to watercolours in a wide range that includes murals, portraits, flowers and abstract.

She continues to explore the use of intense colours in the creation of dramatic, abstract forms
She exhibited in the RA Royal Academy of Arts in 2007.

George Smith Hale End Library

George enjoys working with mosaic pieces and stained glass in a variety of styles



Bea & Simon Taylor Henry Morgan Opticians

Simon Taylor, photographer and BeaTaylor, artist will be exhibiting a small selection of works inspired by nature in Henry Morgan opticians.

Juliet Thomas Humphry's Cafe

Juliet has made a signed, limited edition, A4 giclee print from her watercolour & pencil paintings of female artists, which she created for international woman's day.



Wild About Highams Park Sculpture Trail

As part of the Waltham Forest London Borough of Culture initiative Highams Park Community CIC has been given funding to present the arts trail "Wild About Highams Park". Featuring a series of 12 wood carvings representing animals from the forest. Each animal is carved from felled trees donated by the City of London Corporation, so we can continue to enjoy their beauty.

Events

All week

Pins & Needles Yarnbombing Spot the birdie! 11th-20th May

Spot the birdie.
The members of HP Pins and Needles have been knitting birds and they will be displayed in a tree, can you spot where they are?

Telephone Exchange Cabinets painted by local artists

This is an ongoing project, we have permission to paint several cabinets around Highams Park if you would like to be involved in the project please contact the ARC team at arc.highampark@gmail.com

Outside Indulge Cafe - Painted by Millie McDougal

Outside Highams Park Station - painted by Kelly Adams

Ways of Seeing — John Berger

Feature by Paul Revoir

John Berger author of 'Ways of Seeing', one of the most influential books on art, spent his early years in Highams Park. Local writer Paul Revoir has been researching his works and early life. Read the full article on the ARC facebook page

Friday 10th May

The Highams Park Art Trail - Launch Night Upstairs Yaz Restaurant 7:30pm — till late

Join ARC for an evening kicking off The Highams Park Art Trail, everybody welcome including exhibitors, contributors and the wider community.

arc.highampark@gmail.com

Waltham Forest Music Society All Saints Church

7pm
£10 on the door

Live performance by Occasional Strings and featuring Mezzo-soprano Jasmin Adrian-Dawson. info from V&A Books 0208 531 5695

Saturday 11th May

Vintage Market

Hale End Library
11am—3pm

Our local library transforms into a bustling bazaar! Antique finds, mid century gems, bric a brac, vintage fashion. Live Music, Cake stalls, hot drinks and street food while the market is on.

tinyurl.com/LoveHaleEndLibrary

www.instagram.com/highamparkvintage

Inside the library when Vintage market is on:
Craft, knit and natter, poetry readings, book signings, exhibitions, performances from Harmony E4 Choir and Petite Productions. VR Room and the Making Project - Martin's Rockets.

Pins & Needles Knit & Natter Hale End Library All Day

Join some of the pins and needles ladies for a knit and natter and why not have some cake too. Pins and needles meet alternate Wednesday evenings upstairs at The County Arms and the 1st Saturday of the month at Humphry's Cafe. For more info see their facebook page HP Pins and Needles.

Nick Corble — Diagonal Walking Book Signing Hale End Library 11am—3pm

Like many others, Nick was confused about the state of the nation and hatched a plan to walk through the country, not an ordinary walk though: a diagonal walk, he describes in his book what he discovered. He passed through Highams Park and this is one quote from his book.
"a heartening story of local involvement and regeneration driven from the bottom up, rather than imposed from above"

Instagram@diagonalwalking
www.diagonalwalking.co.uk

Shelley Twinn Book Signing Hale End Library 11am—3pm

Dating is Us is Shelley Twinn's first book. Shelley is a born Londoner, born of a Caribbean father and an English mother in the Swinging 60's. Shelley grew up amid a period of immense social change regarding morals and values in the United Kingdom.

Successful in many careers including fashion, hairdressing and the Civil Service. Shelley is also a singer and performer.

The prompt for the book was relationships and the idea that a 'fairy tale' happy ending is still achievable when the status quo alters.

Petite Productions Musical Theatre Hale End Library 11:30am

Performance from the children who attend Petite Productions musical theatre classes. Classes are based at Highams Park Baptist Church on Monday and Tuesday evenings.

Petiteproductions@outlook.com
Tel: 07950 353805

The Making Project Hale End Library 11am—3pm

Pop in crafting event; build a mini rocket with Martin Chandler.

All free entry & 10th-19th May unless otherwise stated.

The VR Room Hale End Library 11am—3pm

Join Joel Gethin-Lewis in a world of virtual reality with his Nintendo Labo headset and learn how to count in binary.

Prefab Exhibition Hale End Library All Day

A fascinating display of the post war temporary housing that housed people in The Highams Park until the late 1950's. The park was restored as a green space in 1964.

Eunice Black Exhibition Hale End Library All Day

Eunice Black, character actress, best known for her comedy roles in 'On the Buses' was born in Walthamstow but spent many of her formative years in Woodford Green. This display will highlight her teenage years in the 1930's, with extracts from her writings and exploits!

Harmony E4 Choir Hale End Library Car Park 12:15pm

Performance from our very own Harmony E4 Choir doing what they do best.

Sarala Estruch Hale End Library 2:30pm

Children's poetry reading by Sarala Estruch.

Monday 13th May

Wild About Highams Animal Sculpting Junction of Ropers Avenue and Larkshall Road

13th—15th May 10am—3pm

Marshall Lambert will be carving the final animal sculpture as part of the Sculpture Trail, which has been funded by a grant given to Highams Park Community CIC under the Waltham Forest London Borough of Culture initiative. There are a total of 12 carvings depicting forest animals located in various green spaces around Highams Park.

Wednesday 15th May

Little Free Library Launch Poetry Reading by Neal Zetter

276 Hale End Road
6:30pm

New Library boxes will be located at Castle Avenue, Hale End Road and Selwyn Avenue. Martin Chandler will also read poems from "Curses and Verses" by local poet Andrew Casey.

Pins & Needles Craft Swishing Night Upstairs at The County Arms 7.30pm—late

Craft Swish, bring your unwanted unloved craft stash and swap for something you love and will use, or have always fancied trying. Bring your craft stash at 7pm, we will label items while you have a drink at the bar, doors open at 7.30pm then you can swap to your hearts content.

Thursday 16th May

Vine and Verse Vinoramica 7:00pm—9:00pm

Celebrating and matching wine with spoken word – Rabelais (Chinon), Belloc (Burgundy), Byron (Bordeaux) and Smith (Champagne) with poet and comic storyteller Andrew James Brown.

Free entry, wines all available to buy by the glass.

Highams Park Live Upstairs at The County Arms 7:30pm—11:00pm

Highams Park Live presents an acoustic evening of live music and spoken word, with an eclectic programme of local songwriters, poets and storytellers. The event is free and if you want to be part of the audience then please come along on the night and be inspired by the creative atmosphere! For more information check out www.highamparklive.co.uk

Performers are booked in advance contact: Highamparklive@btinternet.com

Friday 17th May

Clay workshop a.r.t sessions Humphry's Cafe 10am—1pm Tickets £30 incl all materials and firing

Be inspired by nature creating small vessels that capture the essence of the natural elements of HighamsPark Lake. You will focus on hand building and experiment applying textures inspired by natural forms. Your vessel will fired and collected after the workshop

Email: a.rt@gmail.com to book 07706 029002 or 07983 710381

Embroidery workshop House of Stitch Humphry's Cafe All Materials included £5 4pm—5pm

Make a felt bird, using simple embroidery stitches. Suitable for children 7+

Contact claire@house-of-stitch.com to book a place.

Pop Up Curry Night

Grace & Albert
£25 per person
7.30pm—Late

3 course vegetarian meal starter, main (3 dishes including rice and naan) and dessert, the evening is BYOB. The price is £25 (cash only please) per person.

Tickets can be bought in advance from Grace & Albert.

Abalicious Hallex Concert Society

All Saints Church
7.30pm-9:30pm
(Doors open 7.00pm)

Abalicious a female tribute duo performing ABBA classics and other hits from the 70's. Tickets available from V&A books or contact:

Hallexconcertse4@gmail.com
020 85276227

Saturday 18th May

Flower Festival

All Saints Church
10am—3pm

A drop in event to celebrate the work of artists in churches. Flowers will complement the work of stained glass artists, silversmiths and woodcarvers, as well as floral displays depicting the events which go on in church such as weddings, baptisms, festivals etc.

Vegan Pop Up Ziggy Played Guitar

£28 per person
7.30pm

Damn Good Curry hosting a Vegan Curry Night.
25 tickets available, with a set menu, £28 per head this includes a drink (beer or prosecco) on arrival.

To book: Liz 07572 464528 or email
info@ziggyplayedguitar.co.uk

Sunday 19th May

The Highams Park Spring Festival

The Highams Park
11am—4pm

Brass band, The Essex Dog Display Team and Highams Park's very own Maypole! Music, entertainment, food, craft stalls, children's bushcraft activities and Highams Park's Great British Bake Off.

The Highams Park, Access from Henry's Avenue, Tamworth Avenue and Keysham Drive

Organised by the Friends of Highams Park

Petite Productions

Musical Theatre
Spring Festival
The Highams Park
11:30am

Performance from the children who attend Petite Productions musical theatre classes. Classes are based at Highams Park Baptist Church on Monday and Tuesday evenings.

Petiteproductions@outlook.com
Tel: 07950 353805

The Highams Park Great British Bake Off

Act 2 Aid
Spring Festival
The Highams Park

Adults £2 ,Children free
Enter a cake
11am—4pm

The winning cakes will be judged at 1pm and first place will receive our Highams Park star baker 2019 prize. Please remember to list all ingredients due to allergy and health concerns.

We will be serving Pimms, scones with jam & cream and cucumber sandwiches.

ALL profits will be donated to SOS Children's Villages International.

Pins & Needles

Spring Festival
The Highams Park
11am—4pm

A free craft stall for children to make a ribbon wind sock.

Highams Park Creatives Spring Festival

The Highams Park
11am—4pm

HPC have their own marquee this year, selling bespoke gifts.

Participants:

Cockleshells
Craftee Fox
Eliz Dahbi
Faye Brown
Herbert Designs
House of Stitch
Kathleen Holt
Lila-Rose Clothes
Liz Jones
Nad & Nora Crochet
Jackie O'Brien

For more stock visit Choice Cards, 28 The Avenue E4, where HPC have residence.

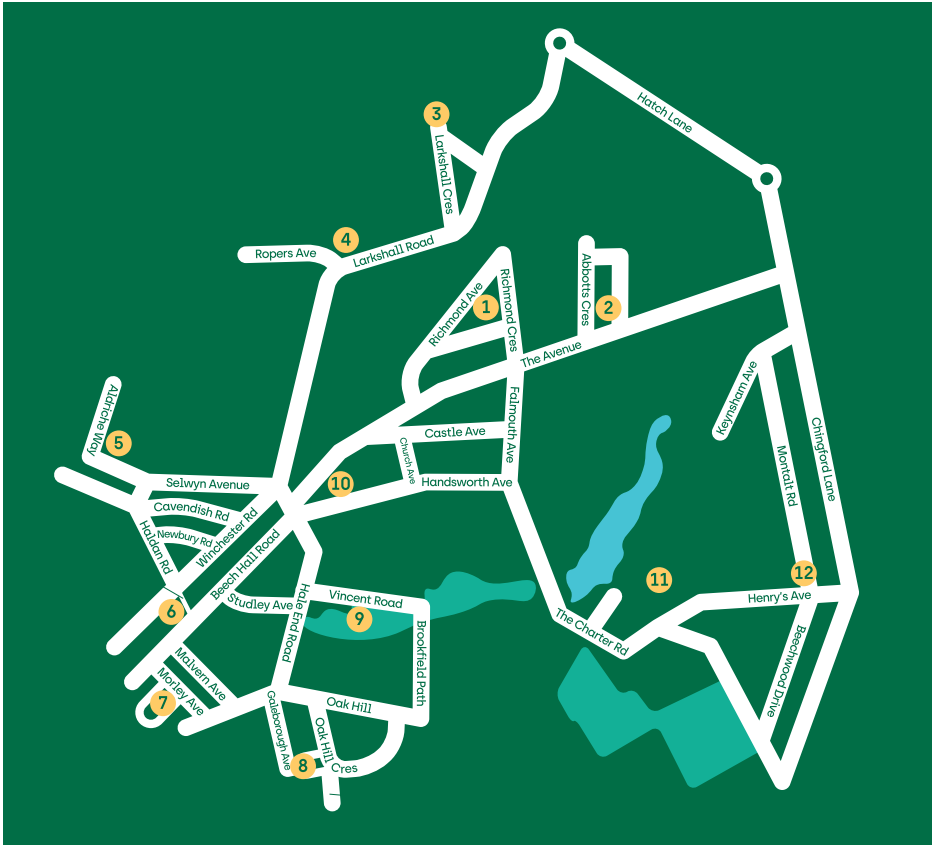
Thank you!

The ARC team is comprised of 4 volunteers:

Claire Rain (House of Stitch),
Jade Holt (Lila-Rose Clothes),
Kerry Phillips (Nad & Nora Crochet),
Martha Kilner (Crafty Kilner).

Thanks to all the artists, designers and creatives who have taken part and all the business owners who have given their time and space for free.

Thanks also to Gordon Turpin, Gillian Poulter, Danielle Heart, Bea Taylor, Suzanne Van Praag and Chris Rain



Wild About Highams Park Sculpture trail

1. The Green, Richmond Crescent, E4 9RT
2. Abbotts Crescent, E4 9SA
3. Larkshall Crescent, E4 6NA
4. Ropers Avenue — Larkshall Road, E4 9EH
5. Aldriche Way, E4 9LU
6. River Walk - Winchester Road, E4 9LH
7. The Hale, (off Morley Avenue), E4 9NS
8. Oak Hill Crescent, IG8 9PW
9. Vincent Road, The Green, E4 9PR
10. Health Centre, Handsworth Avenue, E4 9PD
11. The Highams Park (Maypole), IG8 9RF
12. Beechwood Drive – Henry’s Avenue, IG8 9QY



Sponsored by
Waltham Forest
Ward Forum Funding

Highams Park
Planning Group



VINTAGE MARKET

SATURDAY 11 MAY, 11AM- 3PM

HALE END LIBRARY,
CASTLE AVENUE,
HIGHAMS PARK
E4 9QD

ANTIQUE FINDS, MID CENTURY GEMS,
BRIC A BRAC, VINTAGE FASHION & CRAFT

ZIGGYS HOT DRINKS, APOSTROPHE CAKES & STREET FOOD

PLUS KIDS ACTIVITIES INCLUDING PETITE PERFORMERS DRAMA SESSIONS.

HP PINS & NEEDLES KNIT & NATTER, EXHIBITIONS,

BOOK SIGNINGS AND MORE!

LIVE MUSIC FROM HARMONY E4 CHOIR.



For more info go to -

[tinyurl.com/LoveHaleEndLibrary](https://www.instagram.com/lovehaleendlibrary)



HPPG Organised by The Highams Park Planning Group with Ward Forum Funding

Or visit <https://www.instagram.com/highamparkvintage/>